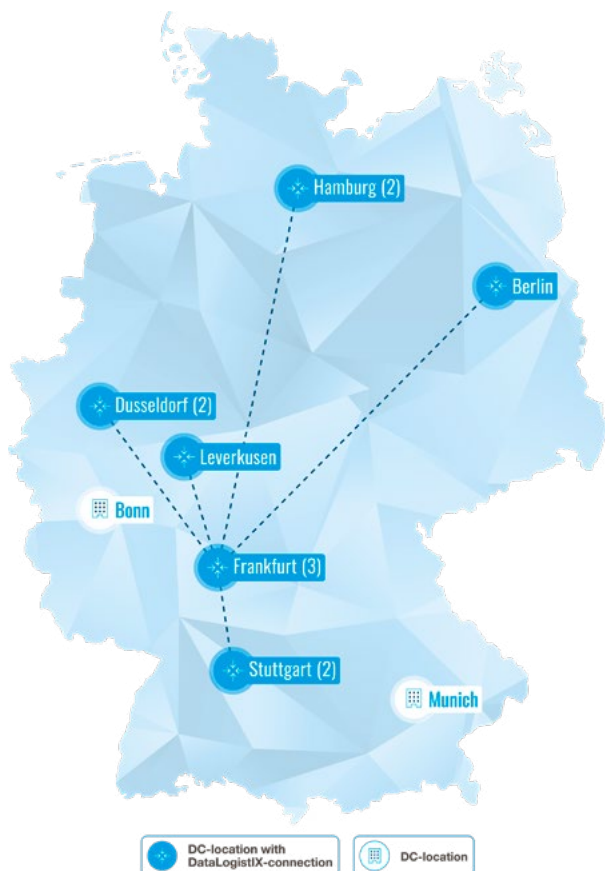
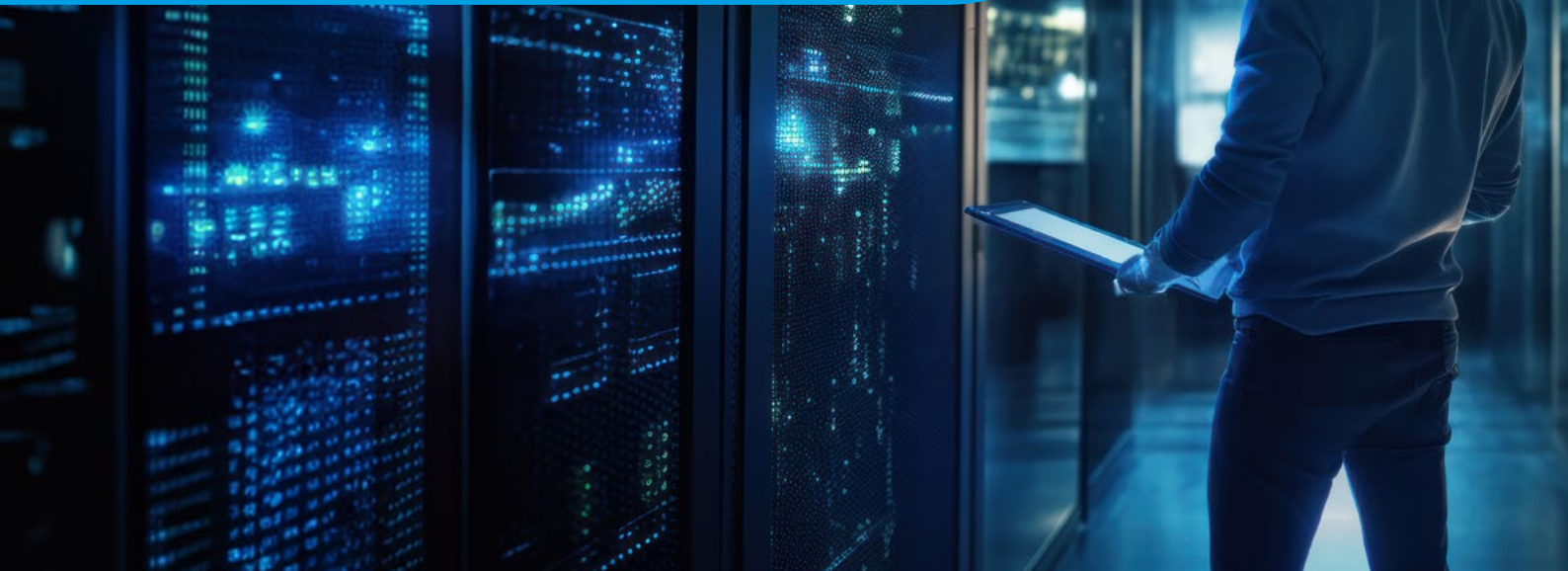


# DATA CENTER MUNICH



## Maximum security in the south of Germany

Our new [data center in Munich](#) expands our footprint in the south of Germany. This Tier 3 data center boasts 2,400 kW of power across an area of 2,500 m<sup>2</sup>. Not only is it highly available and secure, but also easily accessible in an economically important metropolitan area. The location also stands out thanks to an office area and ample parking for customers.

## Excellent connectivity and maximum security

This state-of-the-art data center is connected to the [DataLogistIX platform](#) for optimal networking. This enables high-performance Internet connections, [Cloud Connects](#), and [Ethernet Connect](#) via one port, ensuring excellent connectivity. Thanks to access control and continuous CCTV monitoring with a security archive, this carrier-neutral data center is secure and accessible 24/7. A redundant power supply with independent A and B feeds to each server rack and on-site emergency power generation from renewable energy sources ensure high availability. Early smoke detection and fire extinguishing systems also provide security for IT infrastructure in all the center's technical and critical areas.

# WHAT DISTINGUISHES THE MUNICH DATA CENTER?



## Location

- Munich
- Located just off the A9/A99 ring road, 15 minutes from the main train station, and 20 minutes by car from Munich International Airport
- 2.500 m² total area
- 2.400 kW power
- Tier 3 data center



## Connectivity

- A variety of fiber optic entry points and meet-me rooms
- Directly linked to local MNO and last mile network carriers for low latency performance to wireless and last mile clients



## Security

- 24/7 access with [access control](#) system
- Permanent CCTV monitoring with secure archive
- 24/7 Network Operation Center Services



## Fire safety

- Early smoke detection and alarm system (VESDA)
- Fire suppression equipment in all technical and critical plant areas



## Cooling

- Cooling and humidity design complying with ASHRAE A1 allowable category
- Heat recovery with high export temperature to local heating networks



## Power

- Redundant power with independent A and B feeds to each cabinet
- Operation with 100 % green electricity
- Power redundancy at N+1 power
- On-site backup power generation from renewable sources
- Design Power Usage Effectiveness (PUE) at 1.29

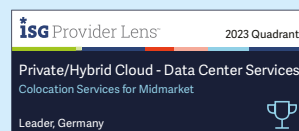
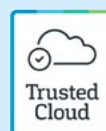


## Services

- Assembly, disassembly and disposal of customer racks
- Hardware installation and operation
- Installation and deinstallation of power supply
- Performance-level measurements
- 24/7 [service desk](#) in Germany



With more than 30 years of experience in the IT industry, ITENOS is your reliable partner. To ensure the greatest possible customer satisfaction our high-quality solutions and services are of course [ISO certified](#) – and we as a company also hold other [awards](#).



Find out more about the Munich data center now!



More information at:  
[www.itenos.de/en/datacenter-munich](http://www.itenos.de/en/datacenter-munich)

Still questions? Please feel free to contact us!



+49 228 7293-333



[vertrieb@itenos.de](mailto:vertrieb@itenos.de)



[www.itenos.de/en](http://www.itenos.de/en)